





ENGINEERED PLASTIC MEDIA



CRYOGENIC GRADE®
Type: Engineered Plastic | Shape: Cylindrical

- » Deflashing all types of molded rubber parts
- » Low temperature/high RPM shot-blast deflashing

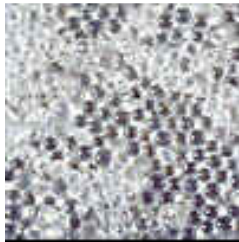
Part Designation	Inches	Millimeters
	Length x Width x Diagonal	Length x Width x Diagonal
CG-125	.125 x .125 x .176	3.18 x 3.18 x 4.48
CG-80	.080 x .080 x .113	2.03 x 2.03 x 2.87
CG-60	.060 x .060 x .085	1.52 x 1.52 x 2.15
CG-45	.045 x .045 x .063	1.14 x 1.14 x 1.61
CG-38	.038 x .038 x .054	0.96 x 0.96 x 1.35
CG-30	.030 x .030 x .042	0.76 x 0.76 x 1.07
CG-20	.020 x .020 x .028	0.50 x 0.50 x 0.72
CG-15	.015 x .015 x .021	0.38 x 0.38 x 0.54



POLYCARBONATE CYLINDRICAL®
Type: Engineered Plastic | Shape: Cylindrical

- » Deflashing of thermoset parts
- » Deburring of machined die cast parts

Part Designation	Inches	Millimeters
	Length x Width x Diagonal	Length x Width x Diagonal
PC-60	.060 x .060 x .085	1.52 x 1.52 x 2.15
PC-45	.045 x .045 x .063	1.14 x 1.14 x 1.61
PC-30	.030 x .030 x .042	0.76 x 0.76 x 1.07
PC-20	.020 x .020 x .028	0.50 x 0.50 x 0.72
PC-15	.015 x .015 x .021	0.38 x 0.38 x 0.54



SPHERICAL POLYSTYRENE®

Type: Engineered Plastic | Shape: Spherical

- » Deflashing sensitive electronic components or delicate rubber parts
- » Deflashing of delicate plastic parts

Part Designation	US Standard Sieve Size	Inches	Millimeters
PB-00	12/18	.066 - .039	1.68 - 0.99
PB-1	18/30	.039 - .024	0.99 - 0.61
PB-2	30/45	.024 - .014	0.61 - 0.36
PB-2.5	35/45	.020 - .014	0.50 - 0.36
PB-3	45/100	.014 - .006	0.36 - 0.15
PB-4	60/100	.010 - .006	0.25 - 0.15



POLYAMIDE CUBICAL®

Type: Engineered Plastic | Shape: Cubical

- » Deflashing on thermoset appearance parts
- » Deburring of machined die cast parts

Part Designation	Inches	Millimeters	Colour
PA-70	.070 cube x .121 (diagonal)	1.78 cube x 3.08 (diagonal)	Natural Only
PA-60	.060 cube x .104 (diagonal)	1.50 cube x 2.64 (diagonal)	Red, Natural or Yellow
PA-50	.050 cube x .087 (diagonal)	1.27 cube x 2.20 (diagonal)	Red Only
PA-40	.040 cube x .069 (diagonal)	1.00 cube x 1.76 (diagonal)	Red or Natural
PA-30	.030 cube x .052 (diagonal)	0.75 cube x 1.32 (diagonal)	Red or Natural
PA-20	.020 cube x .035 (diagonal)	0.50 cube x 0.88 (diagonal)	Red or Natural