



## Silicon Carbide Blasting

<i>Finishing</i>	<i>Cleaning /Removal</i>	<i>Peening</i>	<i>Surface Profile (Etch)</i>	<i>Working Speed</i>	<i>Recyclability</i>	<i>Probability of Metal Removal</i>	<i>Hardness MOH Scale</i>	<i>Bulk Density (lb/cu ft)</i>	<i>Mesh Size</i>	<i>Typical Blast Pressure</i>	<i>Shape</i>
Yes	Yes	No	Yes	V-High	M-Low	V-High	9	95	16-600	40-90	◇

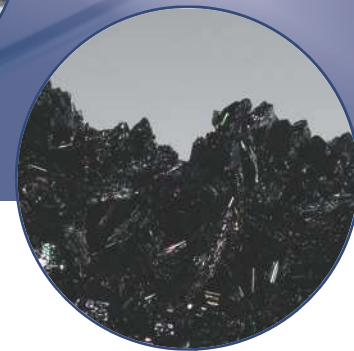
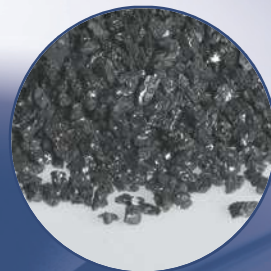
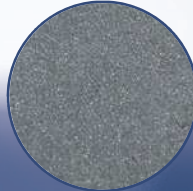
Carborex is a black, semi-friable, medium density, silicon carbide abrasive. Silicon Carbide tends to fracture as it breaks down, generating new sharp cutting edges for a faster blast.

### Applications:

Carborex is used in finishing hard or brittle materials such as cast iron, ceramics, glass, gear lapping, flat lapping of metals and ceramics, and granite polishing . It is also used for grinding low tensile strength, ductile, non-ferrous metals and is available with a silane surface treatment.



**INTERNATIONAL SURFACE  
PREPARATION CANADA LTD**  
5125 Timberlea Blvd Mississauga Ont  
866-669-6643  
sales@ispcltd.com



# CARBOREX® RA

## General Inquiries

Tel: 1-800-828-1666  
info@washingtomills.com  
www.washingtomills.com

## Washington Mills North Grafton, Inc.

PO Box 428  
20 North Main Street  
North Grafton, MA 01536  
Tel: 508-839-6511  
Fax: 508-839-7675  
Email: info@washingtomills.com

## Washington Mills Electro Minerals Corp.

PO Box 423  
1801 Buffalo Avenue  
Niagara Falls, NY 14302  
Tel: 716-278-6600  
Fax: 716-278-6650  
Email: info@washingtomills.com

## Washington Mills Electro Minerals Corp.

PO Box 1002  
7780 Stanley Avenue  
Niagara Falls, Ontario L2E 6V9 Canada  
Email: info@washingtomills.com

## Washington Mills Tonawanda, Inc.

1000 E. Niagara Street  
Tonawanda, NY 14150  
Email: info@washingtomills.com

## Washington Mills Electro Minerals Ltd.

Mosley Road, Trafford Park  
Manchester M17 1NR England  
Email: info@washingtomills.com

## Washington Mills Hennepin, Inc.

13230 ESK Street  
Hennepin, IL 61327  
Email: info@washingtomills.com

## Washington Mills AS

NO-7300  
Orkanger, Norway  
Email: wmas@washingtomills.no

## DESCRIPTION

CARBOREX® RA is a black, semi-friable, medium density, virgin silicon carbide abrasive.

## APPLICATIONS

CARBOREX® RA is used primarily for gear lapping, flat lapping of metals and ceramics, glass grinding, and granite polishing.

## TYPICAL CHEMICAL ANALYSIS

SiC	97.80%
SiO <sub>2</sub>	0.60%
Si	0.80%
Fe	0.20%
Al	0.30%
C	0.30%

## GRAIN SIZES AVAILABLE

6, 8, 10, 12, 14, 16, 20, 24, 30, 36, 46, 54, 60, 70, 80, 90, 100, 120, 150, 180, 220, and 240

## POWDER SIZES AVAILABLE

240, 280, 320, 360, 400, 500, 600, 800, 1000, 1200, F, FF, and FFF

## TYPICAL PHYSICAL PROPERTIES

Crystallography	Alpha silicon carbide in a hexagonal crystal
Color	Black
Specific Gravity	3.20
Knoop <sub>100</sub> Hardness	2450
Shape	Blocky, with sharp edges
Ball Mill Friability	64 (14 grit)
Grading (Grain)	ANSI B74.12-2001, Table 2 OR FEPA 42-1:2006
Grading (Powder)	ANSI B74.10-2001 OR FEPA 42-2:2006
Bulk Density (Grain)	ANSI B74.4-1992 (R2007)

## TYPICAL BULK DENSITY

Grit	g/cc	Grit	g/cc	Grit	g/cc	Grit	g/cc
6	1.48	20	1.55	60	1.49	150	1.41
8	1.49	24	1.54	70	1.48	180	1.39
10	1.50	30	1.53	80	1.46	220	1.38
12	1.55	36	1.53	90	1.45		
14	1.55	46	1.52	100	1.44		
16	1.56	54	1.51	120	1.43		

This product information is NOT a specification. It is offered in good faith only as a general description of the product. **Washington Mills makes no warranty of merchantability or of fitness for any particular purpose.** The product chemistry and other characteristics may vary or contain trace elements not specifically listed. If your intended application for this product is so critical that relatively minor variations in chemistry or physical properties could cause problems or damage to your process or product, please contact our office for further assistance.